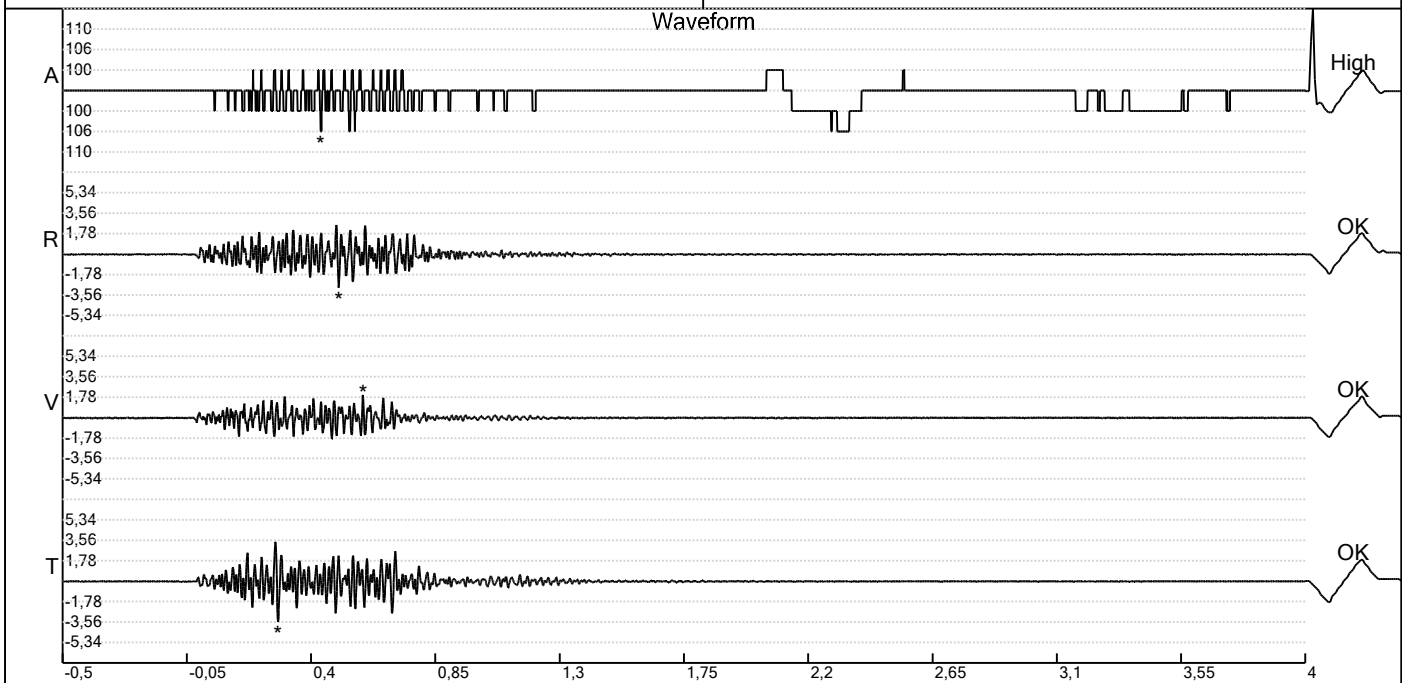


Carrière de BRS
 Aywaille -6
 Tir du 01/10/2025
 Sismographe placé au
 261 Halleux
 4710 Comblain-au-Pont

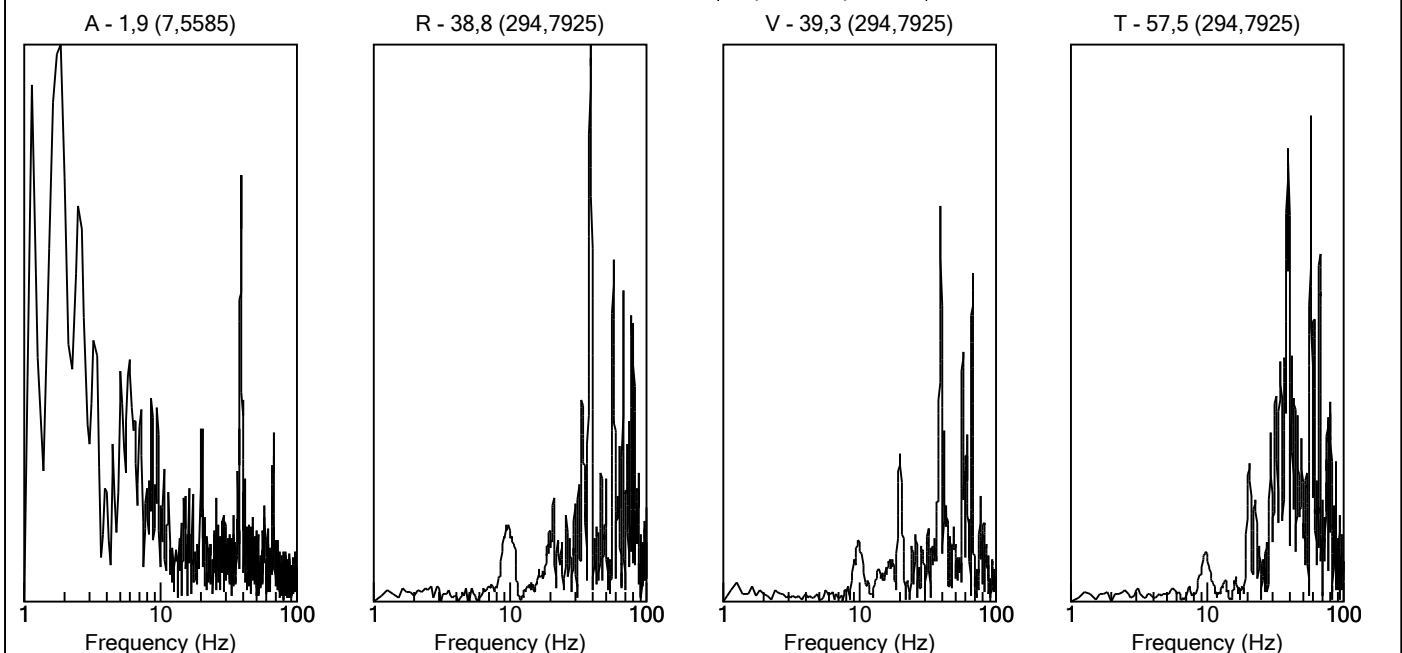
Record: 1789202510011502124.dtb
 Number: 124
 Seismograph: Mini-Seis 1789
 Type of Record: Waveform
 Date: 01-10-25 15:02:00
 Duration: 4,50 Seconds
 Sample Rate: 1024
 Pre-Trigger: 0,5 Seconds
 Seismic Trigger: 0,508 mm/s
 Acoustic Trigger: 142,1 dB
 Seismic Gain: 63,5
 Acoustic Gain: 141,9 dB
 Voltage: 6,7

Peaks and Frequencies
 PPV Maximum (Geo #1): 3,56 mm/s
 Acoustic #1: 106,0 dB @ 85,3 Hz (0,4345703 s)
 Radial #1: 2,92 mm/s @ 51,2 Hz (0,5 s)
 Vertical #1: 1,97 mm/s @ 73,1 Hz (0,5878906 s)
 Transverse #1: 3,56 mm/s @ 46,5 Hz (0,2802734 s)
 Last Calibration Date:

Graph Information
 Time Range: -0,499 s to 4 s, Intervals: 0,4499 Seconds



Fast Fourier Transform (Amplitude Spectrum)

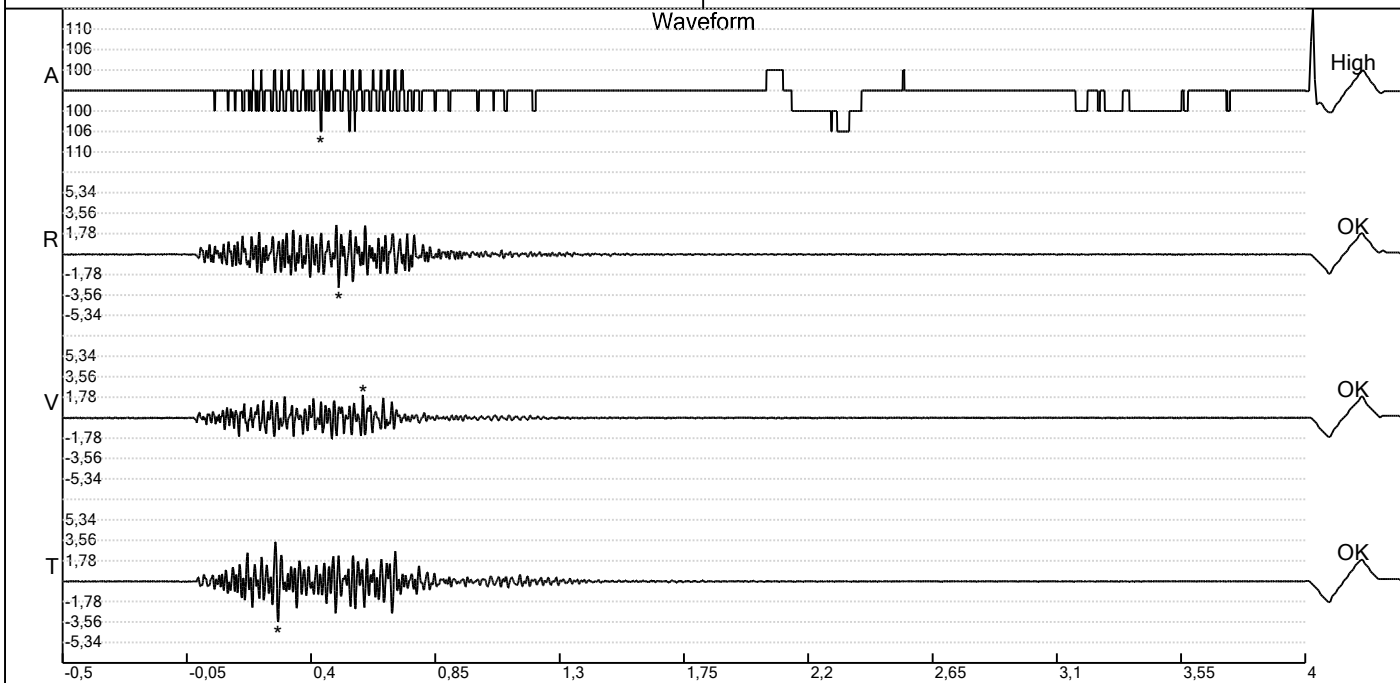


Carrière de BRS
 Aywaille -6
 Tir du 01/10/2025
 Sismographe placé au
 261 Halleux
 4710 Comblain-au-Pont

Record: 1789202510011502124.dtb
 Number: 124
 Seismograph: Mini-Seis 1789
 Type of Record: Waveform
 Date: 01-10-25 15:02:00
 Duration: 4,50 Seconds
 Sample Rate: 1024
 Pre-Trigger: 0,5 Seconds
 Seismic Trigger: 0,508 mm/s
 Acoustic Trigger: 142,1 dB
 Seismic Gain: 63,5
 Acoustic Gain: 141,9 dB
 Voltage: 6,7

Peaks and Frequencies
 PPV Maximum (Geo #1): 3,56 mm/s
 Acoustic #1: 106,0 dB @ 85,3 Hz (0,4345703 s)
 Radial #1: 2,92 mm/s @ 51,2 Hz (0,5 s)
 Vertical #1: 1,97 mm/s @ 73,1 Hz (0,5878906 s)
 Transverse #1: 3,56 mm/s @ 46,5 Hz (0,2802734 s)
 Last Calibration Date:

Graph Information
 Time Range: -0,499 s to 4 s, Intervals: 0,4499 Seconds



Velocity vs. Frequency (DIN 4150-3 Tab 1)

